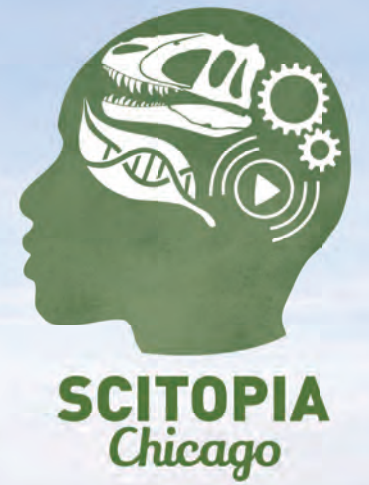


SCITOPIA® *Chicago*



Science Engagement for the 21st Century

CONTENTS

OVERVIEW	2
MISSION, VISION & AIMS	
TEAM	4
BOARD MEMBERS	
ADVISORS	
WORKING GROUPS	
LOCATION	5
CITY VIEW	
NEIGHBORHOOD VIEW	
DESIGN	6
LAYOUT & FUNCTION	
PLAN	
SPACE DETAIL & ORGANIZATION	
TIMELINE	10

OVERVIEW



Scitopia Chicago is located at
300 E. Garfield Boulevard, Chicago, IL 60615
For information, contact Jessica (jkschwartz4@gmail.com)
www.scitopiachicago.com

Scitopia Chicago is overseen by the **Scitopia Foundation**, a 501(c)(3) not for profit educational organization founded in 2021 and based in Chicago.

apb **Architecture for Public Benefit**
Design, illustrations & renderings
apbdesign.org



Generously funded by the
Whitten-Newman Foundation
wnff.org

MISSION

The mission of **Scitopia Chicago** is teen self-realization in science through innovative hands-on learning & community revitalization inspired by a free, resource-rich public destination.

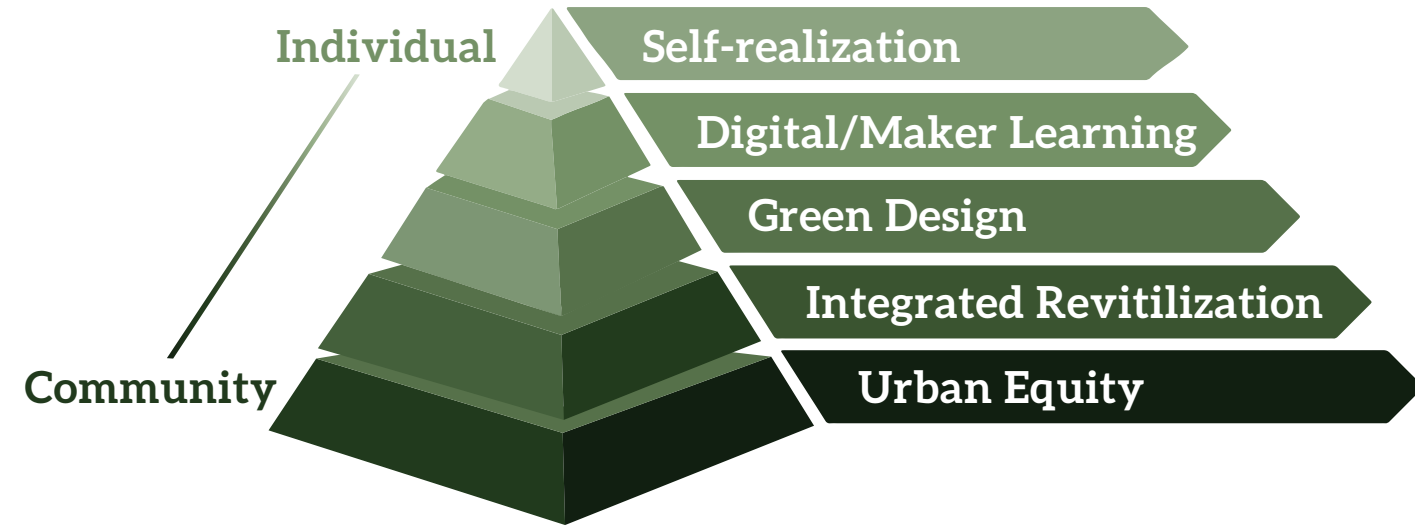
VISION

The vision of **Scitopia Chicago** is for youth on Chicago's southwest side to discover the wonder and excitement of science & for Washington Park to return to the spotlight as a vibrant neighborhood destination.

AIMS

Learning in Community

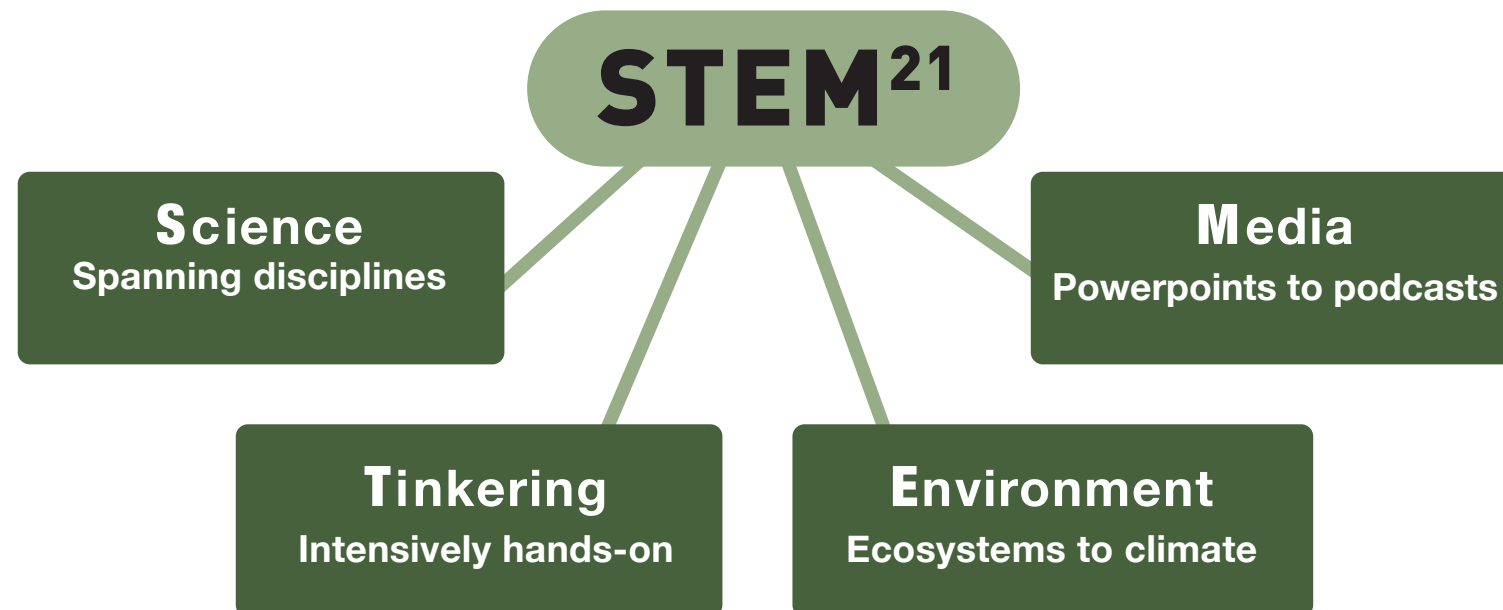
Scitopia Chicago's overarching model is "learning in community" manifested foremost by its location in the heart of Washington Park, a storied, revitalizing southside neighborhood. Location, central to urban equity, lies at the base of a learning pyramid, its apex composed of individuals, none more central than teens self-realizing their future.



EcoLab teens wade in to investigate the health of Washington Park's lagoon.

STEM Redux

Scitopia Chicago redefines "STEM for the 21st Century," replacing the emphasis on applied science and math with hands-on learning, environment and climate, and today's media landscape. Basic math and writing are foundational and mentored.



Audiences

TEENS

Self-realization makerlabs, hangout space, library resources, and mentoring for southside teens to ensure graduation, internships and career pathways

ADULTS

Learning and meeting, lectures, library and horticulture resources, neighborhood history, engaging aspiring teens, and a free, relaxing destination

CITY

Anchor for neighborhood corridor revitalization, school and teacher resource, public library/park district/university connection, unique event space and southwest side destination

NATION

National model for equitable neighborhood-university-city collaboration, ground-breaking zero-energy greenspace and free, iconic public destination

TEAM

Scitopia Chicago's team includes civic leaders, urban planners, scholars, educators and museum designers, with building concept design by Architecture for Public Benefit.

BOARD MEMBERS

Paul Sereno	Professor, UChicago
Cecilia Butler	President, Washington Park Residents' Advocacy Council
Ken Polonsky	Professor, Physician, UChicago, Sr. Advisor to the President
Rev. Jesse Knox III	Senior Minister, Church of the Good Shepherd
Rich Crowley	President, Chicago Herpetological Society
Eric Klinenberg	Author & Professor, New York University
Fabiola Delgado	Chief of Staff, UChicago Natl. Laboratories & Asst. VP for Finance
Jessica Roeder	Project Manager, Fossil Lab at UChicago

ADVISORS

Sophia Carey	Founder & CEO, BuildWise LLC
Jeremy Dunn	Manager of Digital Inclusion, Chicago Housing Authority
Tim Knowles	President, Carnegie Foundation for the Advancement of Teaching
Walter Massey	Senior Advisor to the President, UChicago
Lisa Roberts	Founder & Principal, naturalia, inc.
David Wilts	Founder & CEO, Digital Masterplanning LLC



WORKING GROUPS

Program & Pedagogy

Jennifer Steele	Executive Director, Open Books
Bryan Wunar	Director of Community Initiatives, Griffin Museum of Science Industry
Timothy O'Connell	Deputy Chief Program Officer, Chicago Park District
Wade Berger	Postdoctoral student, frm. Teen Learning Lab Manager at Shedd Aquarium
Lauren Norwood	Principal, Burke Elementary School
Jessica Biggs	Chicago Board of Education District 6
Dan Yao	One Summer Chicago
Emily Bretl	Managing Director, UChicago Warren Woods Field Station
Julie Koslowsky	Director of Teen Services, Chicago Public Library
Stephen Baker	Urban Doctoral Fellows Coordinator, Mansueto Institute

Design

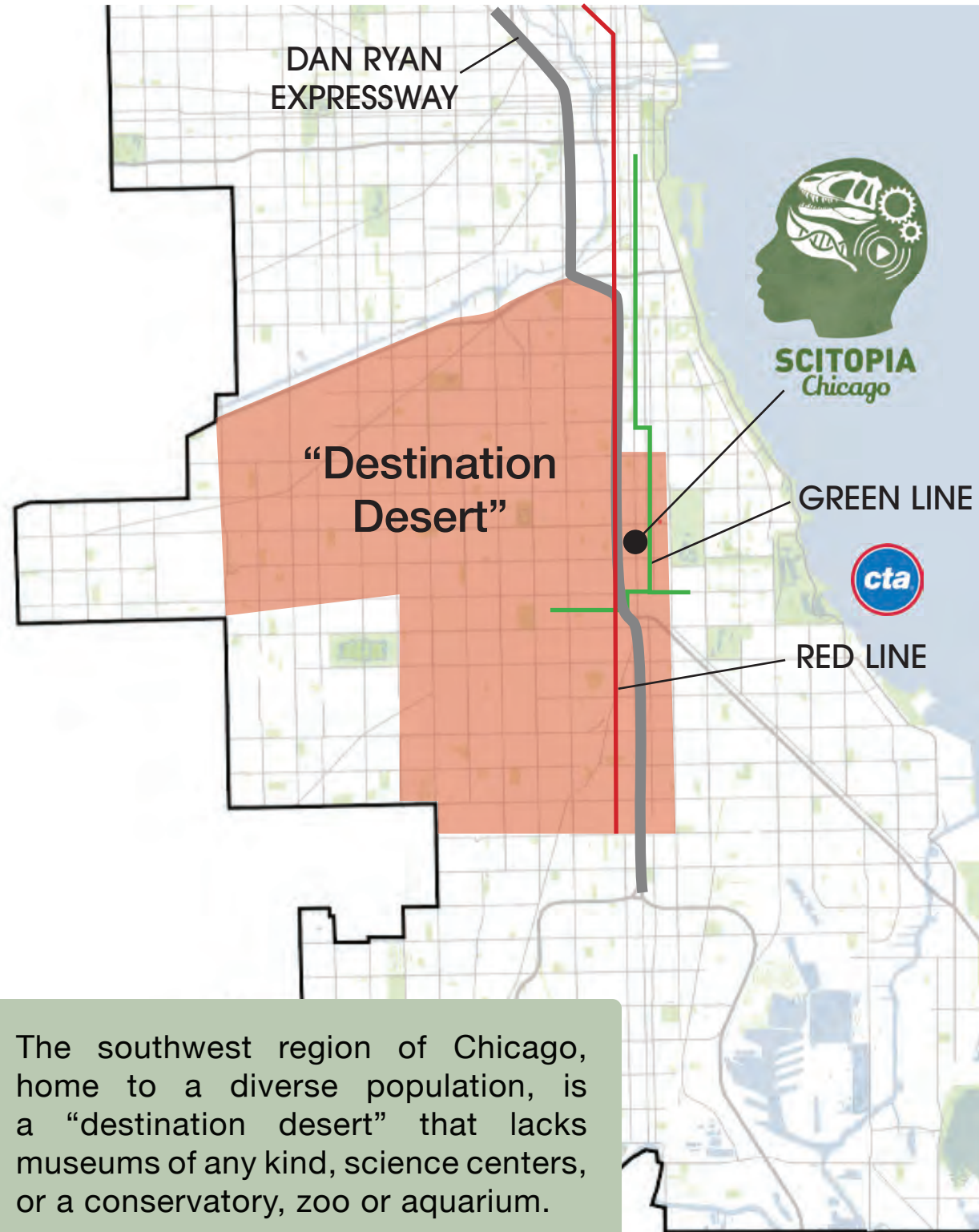
Lisa Roberts	Principal, Naturalia
Ray Jorgensen	Floraculturist, Garfield Conservatory, Chicago Park District
Rich Crowley	President, Chicago Herpetological Society
F. Gianluca Sperone	Geospatial Data Analyst, Wayne State University
Thomas Costanza	Foreman, Garfield Conservatory, Chicago Park District
Omar Adawi	Mathematics Professor, Parkland College
Gina Grant	Learning Ecosystem Architect, Core Kind
Dwayne Daniel	President, Washington Park Homeowners Association
Darlene Wells	Photographer, Washington Park resident
Cecilia Butler	President, Washington Park Residents' Advocacy Council
Michelle Day	Chief Executive Officer, A Restorative Justice Consultancy



LOCATION

CITY VIEW

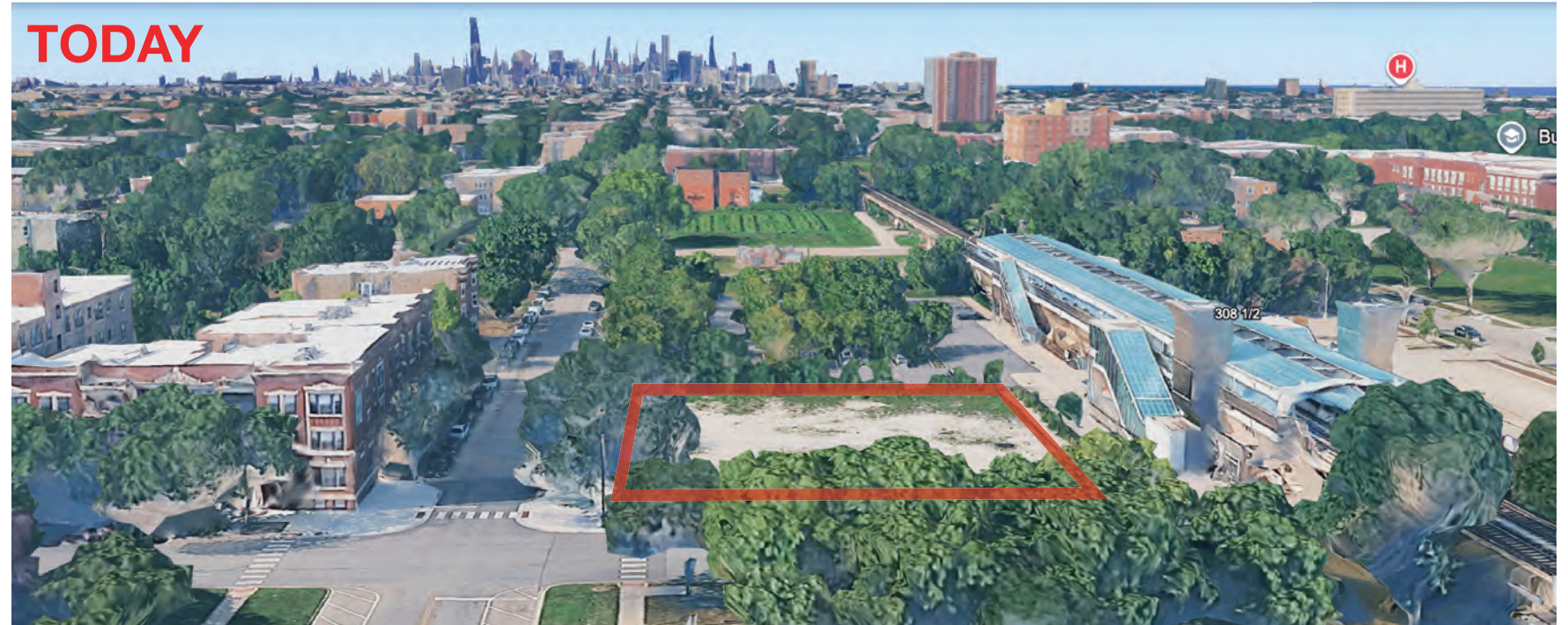
Scitopia Chicago lies within a transit corridor including two CTA rail lines, an expressway, major avenues and a boulevard corridor.



The southwest region of Chicago, home to a diverse population, is a “destination desert” that lacks museums of any kind, science centers, or a conservatory, zoo or aquarium.

NEIGHBORHOOD VIEW

Scitopia Chicago will begin to balance Chicago’s long-standing lakefront museums and institutions.



Scitopia Chicago, located in the heart of the Washington Park neighborhood, lies at the center of one of Chicago’s envisioned transit hubs (eTOD), with some five million passengers passing by annually along Garfield Boulevard or the CTA’s Green Line.

DESIGN

LAYOUT & FUNCTION

Scitopia Chicago aims to be the first carbon-neutral, net-zero-energy (LEED Platinum) public science destination in the world by employing renewable cross-laminated timber and advanced smart glass and by harnessing geothermal and solar energy.



The *ground floor* includes **Visions**, an exhibition and event space showcasing the neighborhood's 1950s jazz scene and the ecological diversity of its landscaped park, the **Lost World's** unique Africa-themed museum-conservatory-vivarium, and the **Golden Lily Café**, a place to relax, connect or seek library resources. Teens have access to the **Imaginarium's** work and hangout areas and project resources.

The *second floor* includes the **MakerPlace**, an event and performance space that allows observation of hands-on learning in **MakerLabs**, a **Solarium** to engage horticulture activities, and access to the canopy views of the **Lost World Skywalk**.



MakerLabs

Four small-group labs for hands-on programs spanning the sciences and media.



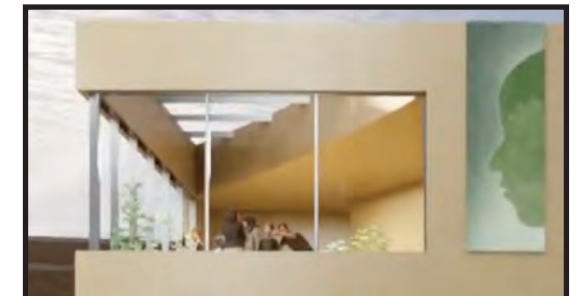
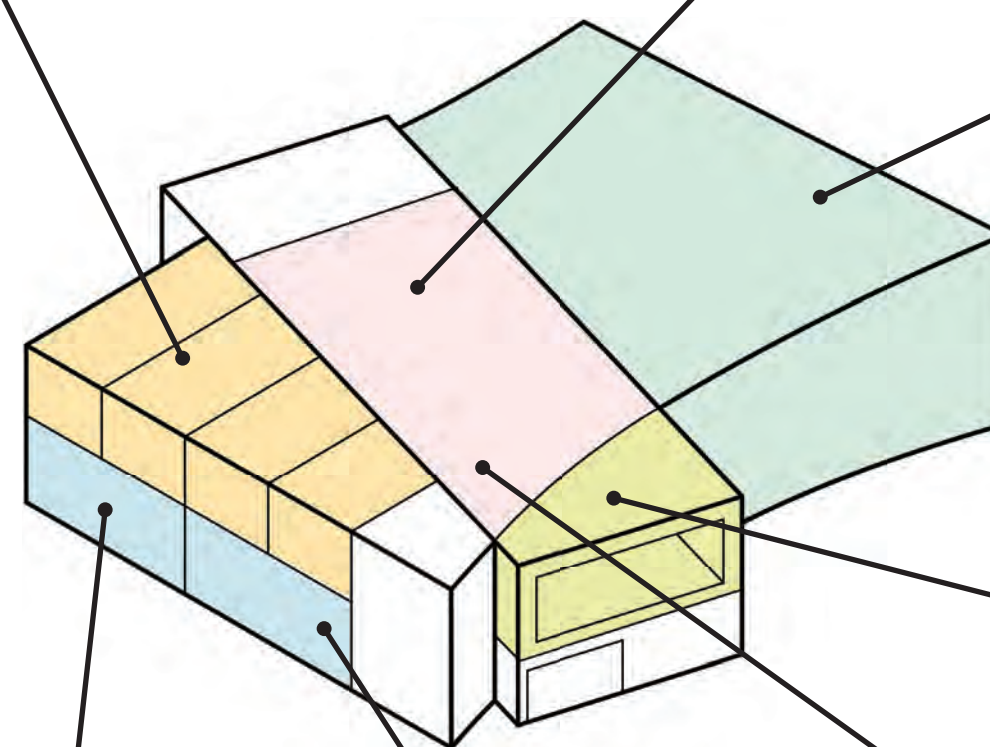
MakerPlace

A flexible event and performance space at the center of the second floor.



Lost World

Conservatory-vivarium-museum connecting West Africa's living biota with its deep past.



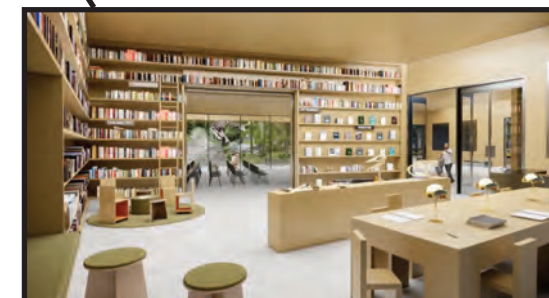
Solarium

Sun-soaked greenspace for horticulture programs.



Golden Lily Café

Like its neighborhood namesake, a welcoming community-run venue for connecting and reflecting.



Imaginarium

Teen dream space to meet, connect, plan, work or just hangout and snack.



Visions

Neighborhood exhibition space also available for lectures or meetings.

PLAN

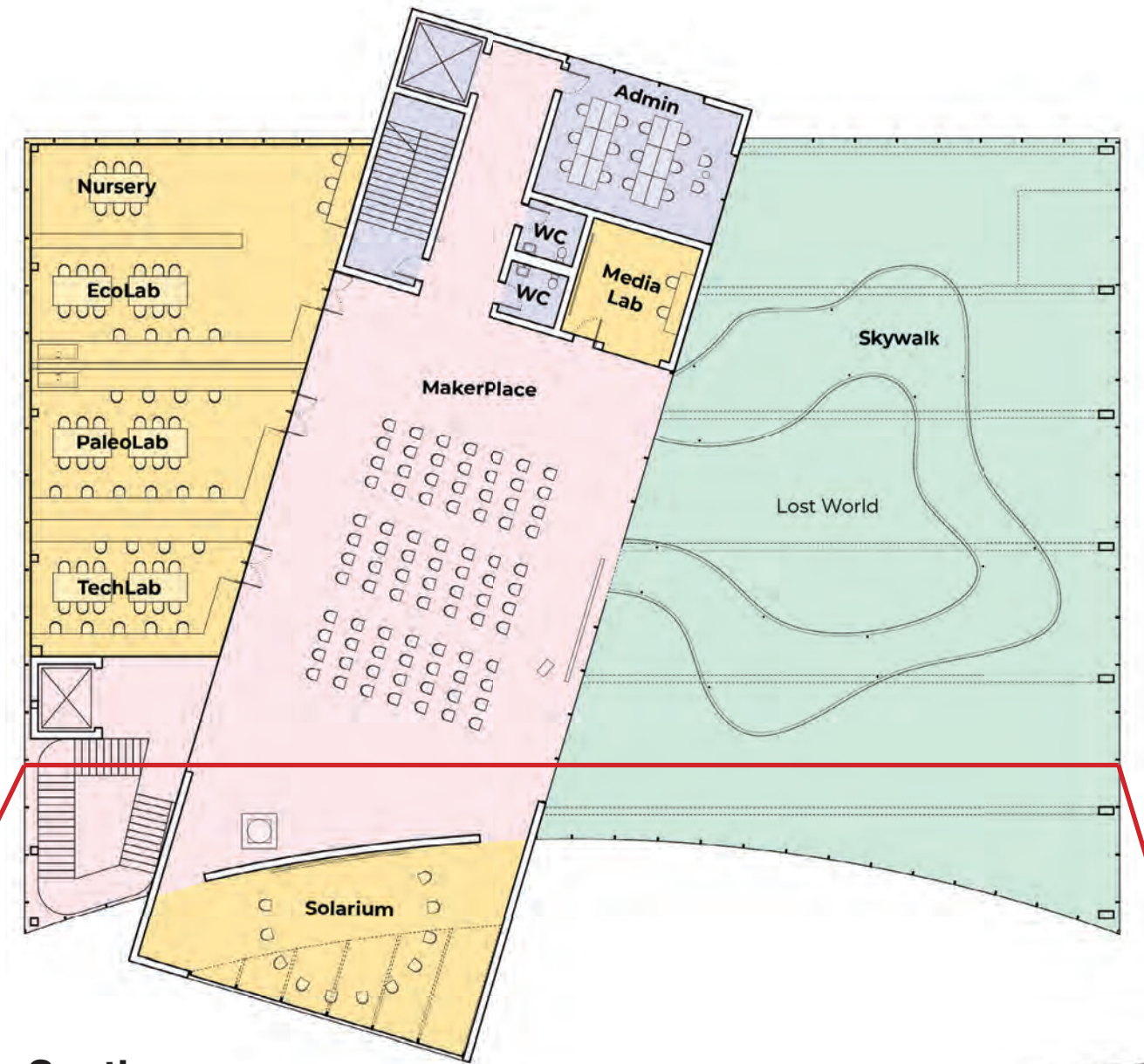
Ground Floor



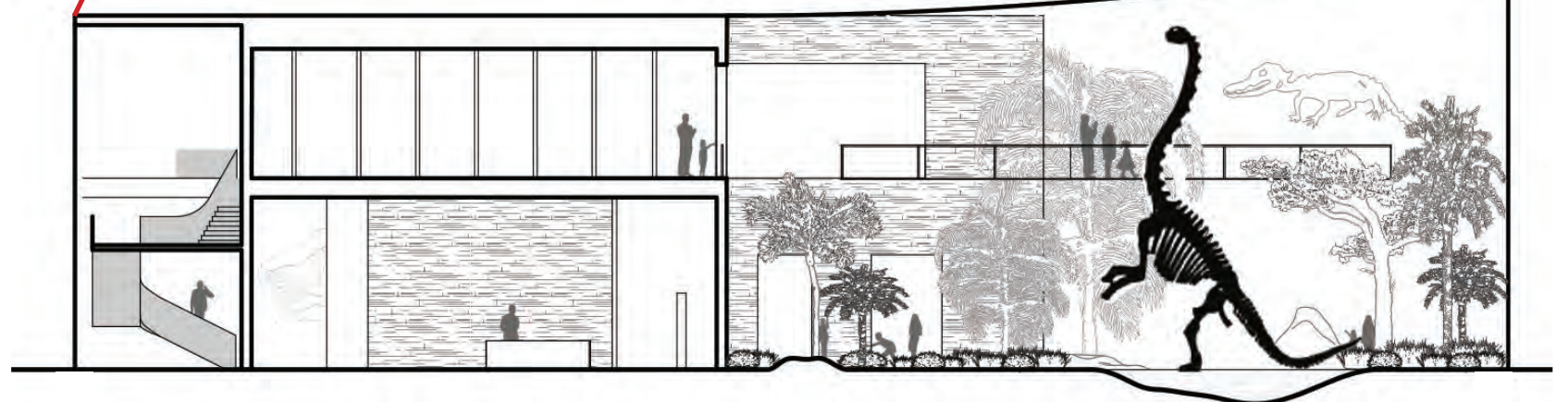
Scitopia Chicago, designed with community input, will transform a long vacant lot into an exciting science center and destination, providing educational opportunities for teens, celebrating the neighborhood's storied past, and opening a unique public destination in the center of a transit hub.

Scitopia Chicago, designed to facilitate positive social interaction, juxtaposes under one roof a half-dozen cultural components that have never been co-located.

Second Floor



Cross Section



SPACE DETAIL & ORGANIZATION

Lost World

This student-tended wonderland is a unique conservatory-vivarium-museum that for the first time brings together West Africa's iconic living and extinct species. On promenades between pools surrounded by the skeletons of extinct creatures, visitors will encounter living plants and animals with ancestry rooted in the dinosaur era.



African Plants

- ① Golden flame (*Gazania*)
- ② Protea (*Protea*)
- ③ Baobag (*Adansonia*)
- ④ Aloe (*Aloe*)
- ⑤ African Tree fern (*Alsophila*)
- ⑥ African cycad (*Encephalartos*)
- ⑦ Snake grass (*Equisetum*)
- ⑧ Araucaria (*Araucaria*)
- ⑨ Gingko (*Gingko*)
- ⑩ Welwitschia (*Welwitschia*)

African Animals

- (A) Dwarf crocodile (*Osteolaemus*)
- (B) Birchir (*Polypterus*)
- Crocodile turtle (*Pelomedusa*)
- (C) Guinea fowl (*Numida*)
- (D) Crested chameleon (*Trioceros*)

African Dinosaurs

- (I) Spinosaurid (*Suchomimus*)
- (II) SuperCroc (*Sarcosuchus*)
- (III) Flying reptile (pterosaur)
- (IV) Meat eater (*Afrovenator*)
- (V) Plant eater (*Jobaria*)



Visions

In the 1950s, Black Jazz was hopping in Washington Park, as described in the most prominent anthology of the movement: “Most of the night clubs and lounges along Garfield Boulevard were open 24 hours a day, so there was a lot of all-night sidewalk traffic.” The sights and sounds come alive in this space for all to appreciate. Likewise, the lagoon and other hidden gems in one of the city’s greatest parks are mapped and accessible in fly-overs for all to see.



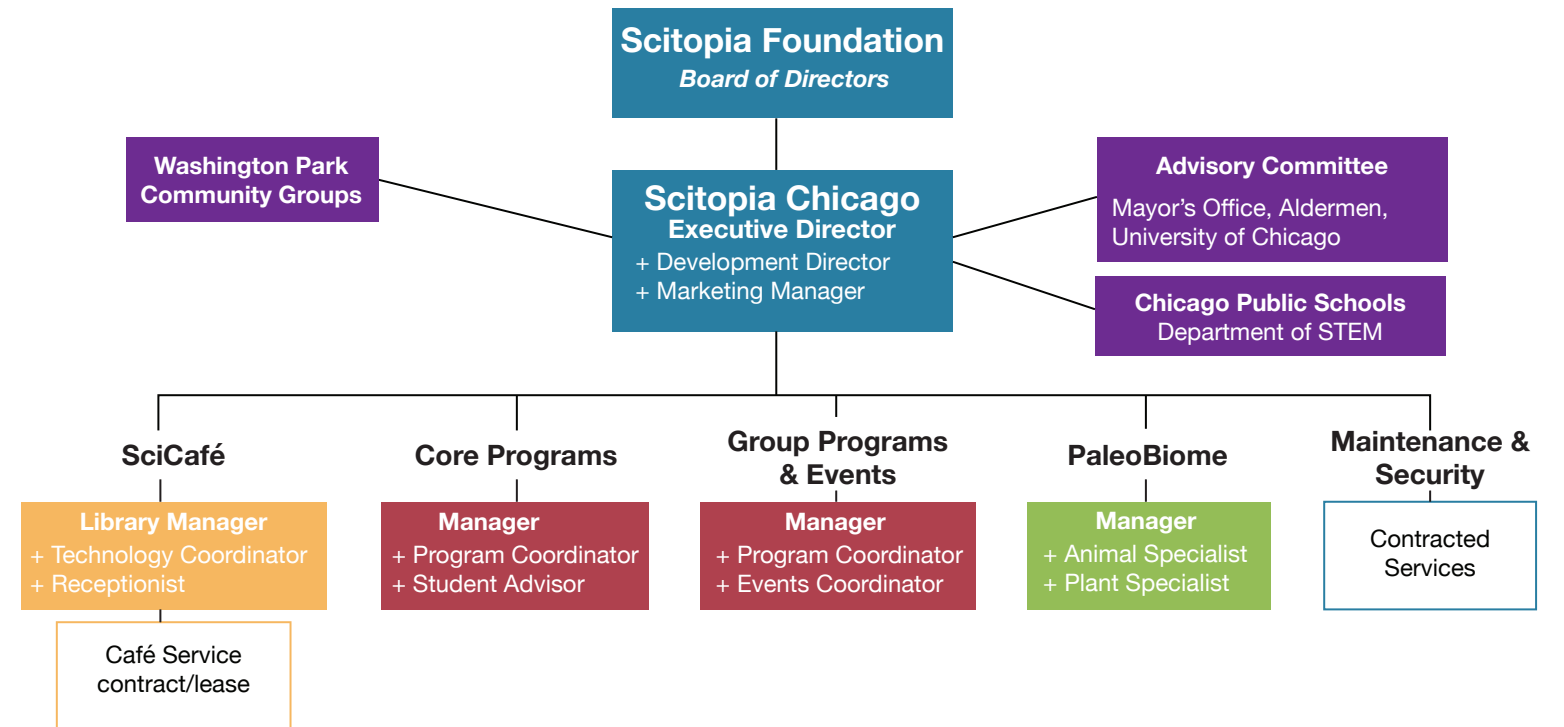
PaleoLab

Mobile workstations, tools and equipment, a dry erase board, a projection screen and demonstration counter facilitate hands-on learning across earth science, from paleontology to forensics and cosmology. Out-of-school programs engage students in maintaining and creating exhibition components in the **Lost World** and elsewhere.



Organization

Scitopia Chicago, overseen by the Scitopia Foundation, is managed by an Executive Director who receives input from several advisory bodies including Washington Park community groups.



Corridor Partners

Partners in proximity at the east end of the Garfield Corridor include a City Colleges Learning Portal, a UChicago Clinical Technology and Training Lab, UChicago Arts Block, Burke Elementary School and city organizations and plans highlighting transit-oriented development and greenspace.



TIMELINE

