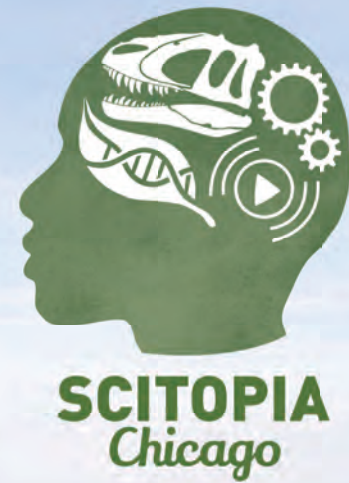


# SCITOPIA® *Chicago*



Science Engagement for the 21<sup>st</sup> Century

# CONTENTS

<b>OVERVIEW</b>	<b>2</b>
MISSION, VISION & AIMS	
<b>TEAM</b>	<b>4</b>
BOARD MEMBERS	
ADVISORS	
WORKING GROUPS	
<b>LOCATION</b>	<b>5</b>
CITY VIEW	
NEIGHBORHOOD VIEW	
<b>DESIGN</b>	<b>6</b>
LAYOUT & FUNCTION	
PLAN	
SPACE DETAIL & ORGANIZATION	
<b>CONSTRUCTION &amp; OPERATION</b>	<b>10</b>
CONSTRUCTION COST	
OPERATING BUDGET	
<b>TIMELINE</b>	<b>11</b>



**Scitopia Chicago** is located at  
300 E. Garfield Boulevard, Chicago, IL 60615  
For information, contact Jessica (jkschwartz4@gmail.com)  
[www.scitopiachicago.com](http://www.scitopiachicago.com)

**Scitopia Chicago** is overseen by the **Scitopia Foundation**, a 501(c)(3) not for profit educational organization founded in 2021 and based in Chicago.

**apb** **Architecture for Public Benefit**  
Design, illustrations & renderings  
[apbdesign.org](http://apbdesign.org)



Generously funded by the  
**Whitten-Newman Foundation**  
[wnff.org](http://wnff.org)

# OVERVIEW



## MISSION

The mission of **Scitopia Chicago** is teen self-realization in science through innovative hands-on learning & community revitalization inspired by a free, resource-rich public destination.

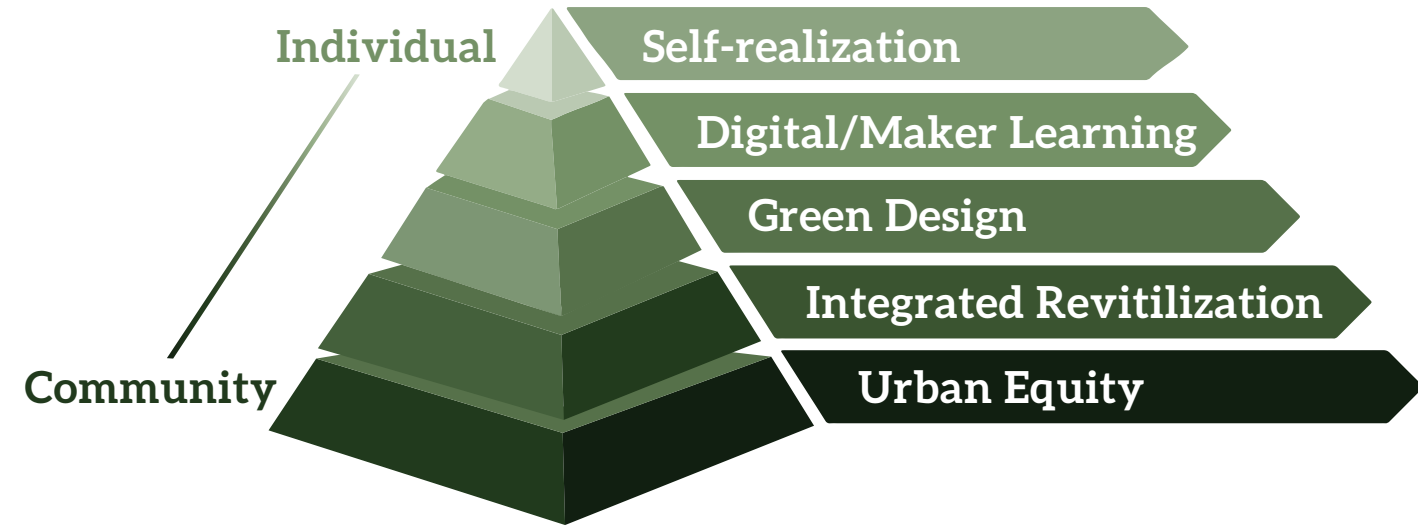
## VISION

The vision of **Scitopia Chicago** is for youth on Chicago's southwest side to discover the wonder and excitement of science & for Washington Park to return to the spotlight as a vibrant neighborhood destination.

# AIMS

## Learning in Community

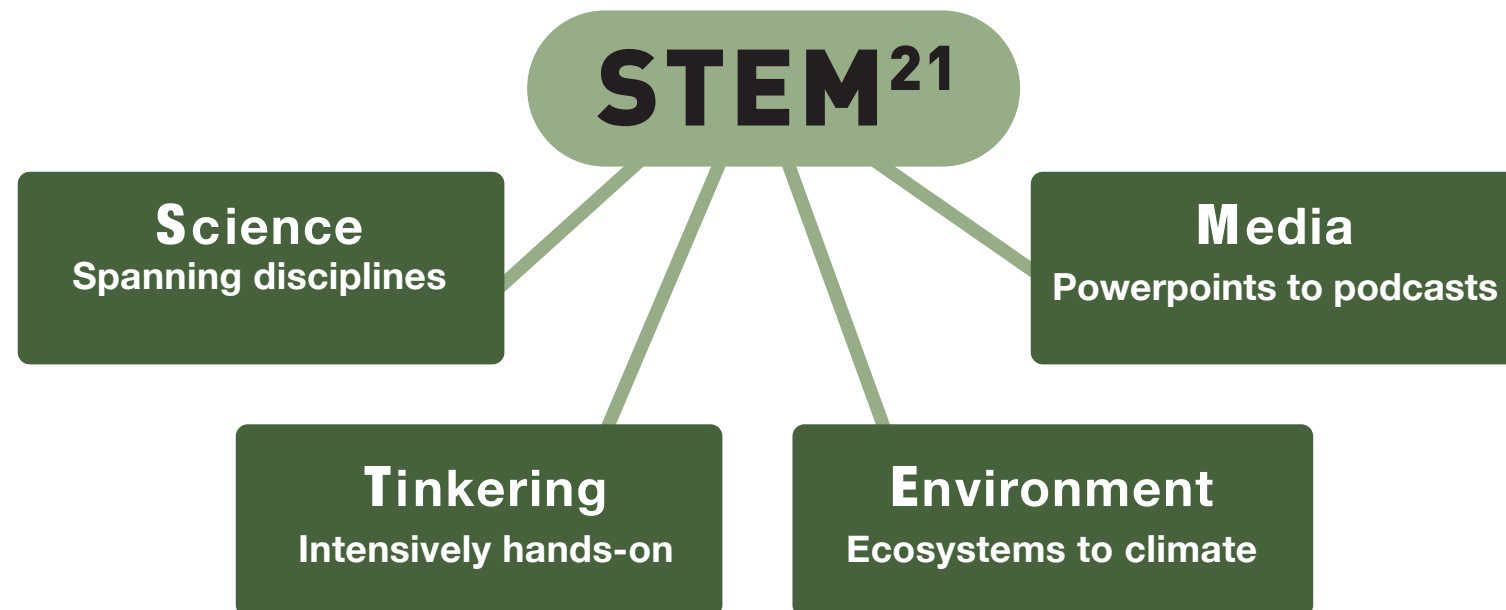
*Scitopia Chicago*'s overarching model is "learning in community" manifested foremost by its location in the heart of Washington Park, a storied, revitalizing southside neighborhood. Location, central to urban equity, lies at the base of a learning pyramid, its apex composed of individuals, none more central than teens self-realizing their future.



EcoLab teens wade in to investigate the health of Washington Park's lagoon.

## STEM Redux

*Scitopia Chicago* redefines "STEM for the 21<sup>st</sup> Century," replacing the emphasis on applied science and math with hands-on learning, environment and climate, and today's media landscape. Basic math and writing are foundational and mentored.



## Audiences

### TEENS

Self-realization makerlabs, hangout space, library resources, and mentoring for southside teens to ensure graduation, internships and career pathways

### ADULTS

Learning and meeting, lectures, library and horticulture resources, neighborhood history, engaging aspiring teens, and a free, relaxing destination

### CITY

Anchor for neighborhood corridor revitalization, school and teacher resource, public library/park district/university connection, unique event space and southwest side destination

### NATION

National model for equitable neighborhood-university-city collaboration, ground-breaking zero-energy greenspace and free, iconic public destination

# TEAM

*Scitopia Chicago*'s team includes civic leaders, urban planners, scholars, educators and museum designers.

## BOARD MEMBERS

<b>Paul Sereno</b>	Professor, UChicago
<b>Cecilia Butler</b>	President, Washington Park Residents' Advocacy Council
<b>Ken Polonsky</b>	Professor, Physician, UChicago, Sr. Advisor to the President
<b>Rev. Jesse Knox III</b>	Senior Minister, Church of the Good Shepherd
<b>Rich Crowley</b>	President, Chicago Herpetological Society
<b>Eric Klinenberg</b>	Author & Professor, New York University
<b>Fabiola Delgado</b>	Chief of Staff, UChicago Natl. Laboratories & Asst. VP for Finance
<b>Jessica Roeder</b>	Project Manager, Fossil Lab at UChicago

## ADVISORS

<b>Sophia Carey</b>	Founder & CEO, BuildWise LLC
<b>Jeremy Dunn</b>	Manager of Digital Inclusion, Chicago Housing Authority
<b>Tim Knowles</b>	President, Carnegie Foundation for the Advancement of Teaching
<b>Walter Massey</b>	Senior Advisor to the President, UChicago
<b>Lisa Roberts</b>	Founder & Principal, naturalia, inc.
<b>David Wilts</b>	Founder & CEO, Digital Masterplanning LLC



# WORKING GROUPS

## Program & Pedagogy

<b>Jennifer Steele</b>	Executive Director, Open Books
<b>Bryan Wunar</b>	Director of Community Initiatives, Griffin Museum of Science Industry
<b>Timothy O'Connell</b>	Deputy Chief Program Officer, Chicago Park District
<b>Wade Berger</b>	Postdoctoral student, frm. Teen Learning Lab Manager at Shedd Aquarium
<b>Lauren Norwood</b>	Principal, Burke Elementary School
<b>Jessica Biggs</b>	Chicago Board of Education District 6
<b>Dan Yao</b>	One Summer Chicago
<b>Emily Bretl</b>	Managing Director, UChicago Warren Woods Field Station
<b>Julie Koslowsky</b>	Director of Teen Services, Chicago Public Library
<b>Stephen Baker</b>	Urban Doctoral Fellows Coordinator, Mansueto Institute

## Design

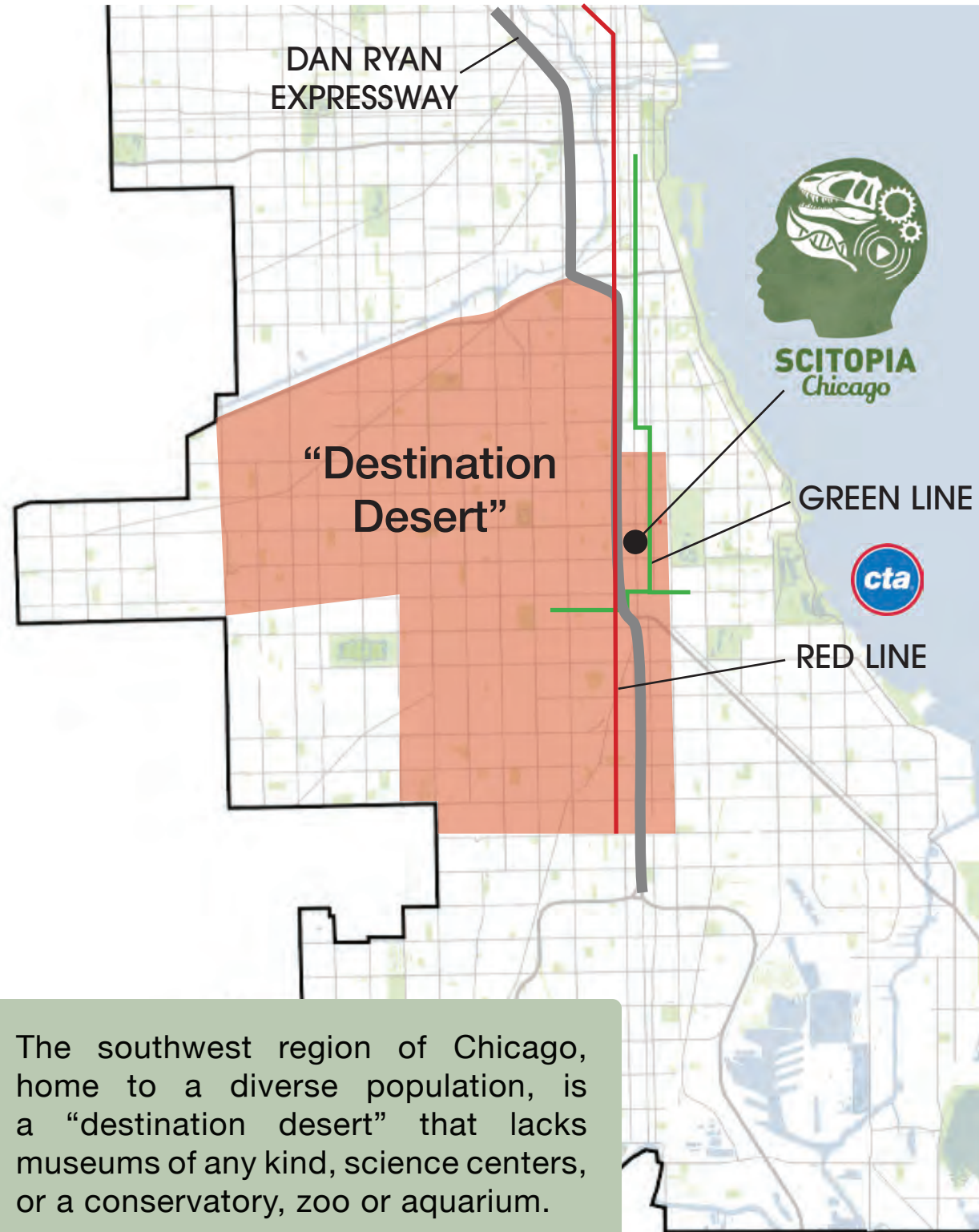
<b>Lisa Roberts</b>	Principal, Naturalia
<b>Ray Jorgensen</b>	Floraculturist, Garfield Conservatory, Chicago Park District
<b>Rich Crowley</b>	President, Chicago Herpetological Society
<b>F. Gianluca Sperone</b>	Geospatial Data Analyst, Wayne State University
<b>Thomas Costanza</b>	Foreman, Garfield Conservatory, Chicago Park District
<b>Omar Adawi</b>	Mathematics Professor, Parkland College
<b>Gina Grant</b>	Learning Ecosystem Architect, Core Kind
<b>Dwayne Daniel</b>	President, Washington Park Homeowners Association
<b>Darlene Wells</b>	Photographer, Washington Park resident
<b>Cecilia Butler</b>	President, Washington Park Residents' Advocacy Council
<b>Michelle Day</b>	Chief Executive Officer, A Restorative Justice Consultancy



# LOCATION

## CITY VIEW

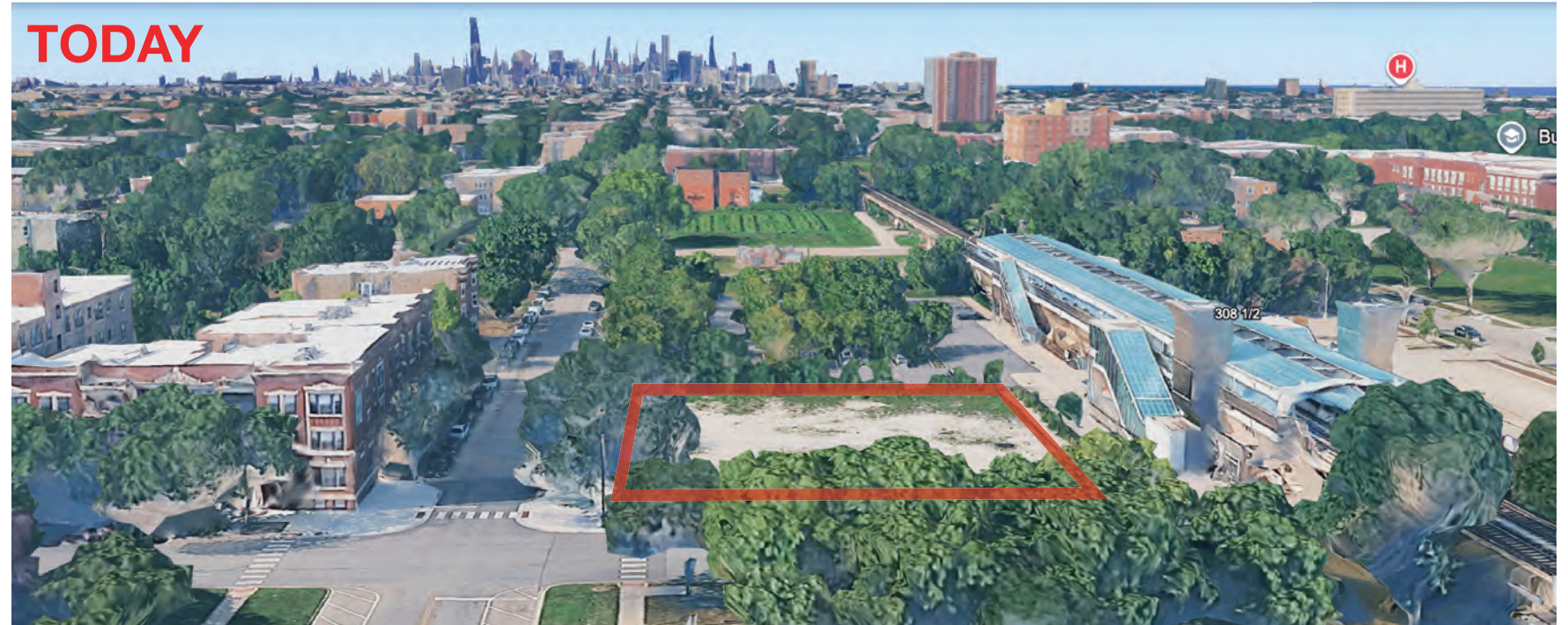
*Scitopia Chicago* lies within a transit corridor including two CTA rail lines, an expressway, major avenues and a boulevard corridor.



The southwest region of Chicago, home to a diverse population, is a “destination desert” that lacks museums of any kind, science centers, or a conservatory, zoo or aquarium.

## NEIGHBORHOOD VIEW

*Scitopia Chicago* will begin to balance Chicago’s long-standing lakefront museums and institutions.



*Scitopia Chicago*, located in the heart of the Washington Park neighborhood, lies at the center of one of Chicago’s envisioned transit hubs (eTOD), with some five million passengers passing by annually along Garfield Boulevard or the CTA’s Green Line.

# DESIGN

## LAYOUT & FUNCTION

*Scitopia Chicago* aims to be the first carbon-neutral, net-zero-energy (LEED Platinum) public science destination in the world by employing renewable cross-laminated timber and advanced smart glass and by harnessing geothermal and solar energy.



The *ground floor* includes **Visions**, an exhibition and event space showcasing the neighborhood's 1950s jazz scene and the ecological diversity of its landscaped park, the **Lost World's** unique Africa-themed museum-conservatory-vivarium, and the **Golden Lily Café**, a place to relax, connect or seek library resources. Teens have access to the **Imaginarium's** work and hangout areas and project resources.

The *second floor* includes the **MakerPlace**, an event and performance space that allows observation of hands-on learning in **MakerLabs**, a **Solarium** to engage horticulture activities, and access to the canopy views of the **Lost World Skyway**.



### MakerLabs

Four small-group labs for hands-on programs spanning the sciences and media.



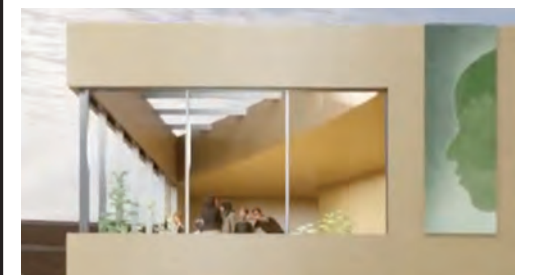
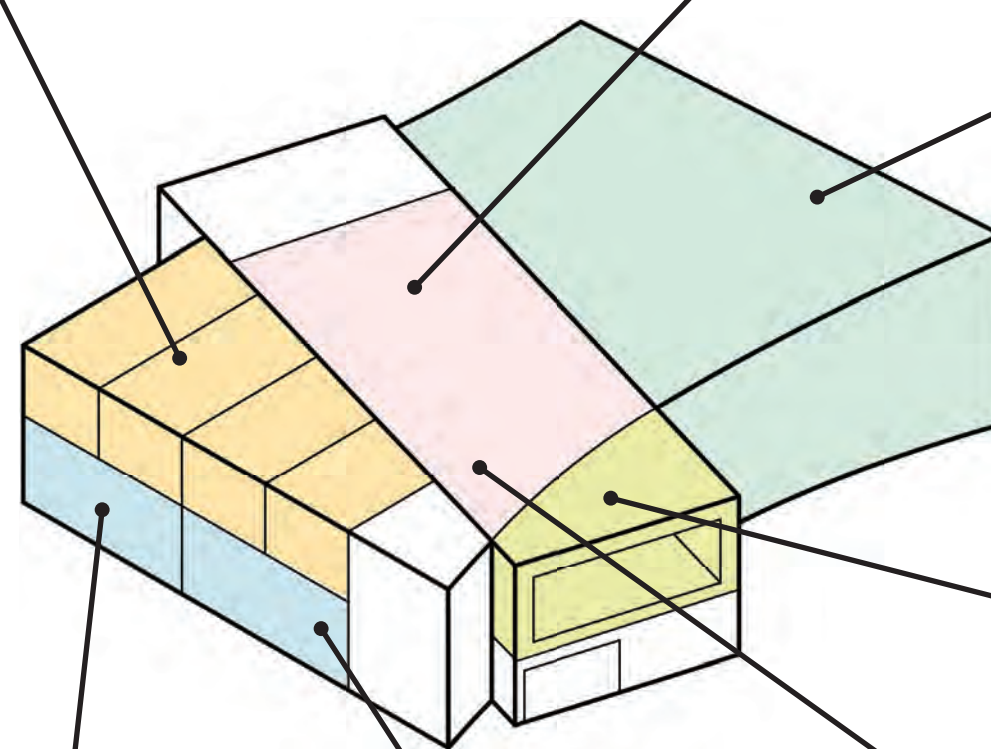
### MakerPlace

A flexible event and performance space at the center of the second floor.



### Lost World

Conservatory-vivarium-museum connecting West Africa's living biota with its deep past.



### Solarium

Sun-soaked greenspace for horticulture programs.



### Golden Lily Café

Like its neighborhood namesake, a welcoming community-run venue for connecting and reflecting.



### Imaginarium

Teen dream space to meet, connect, plan, work or just hangout and snack.



### Visions

Neighborhood exhibition space also available for lectures or meetings.

# PLAN

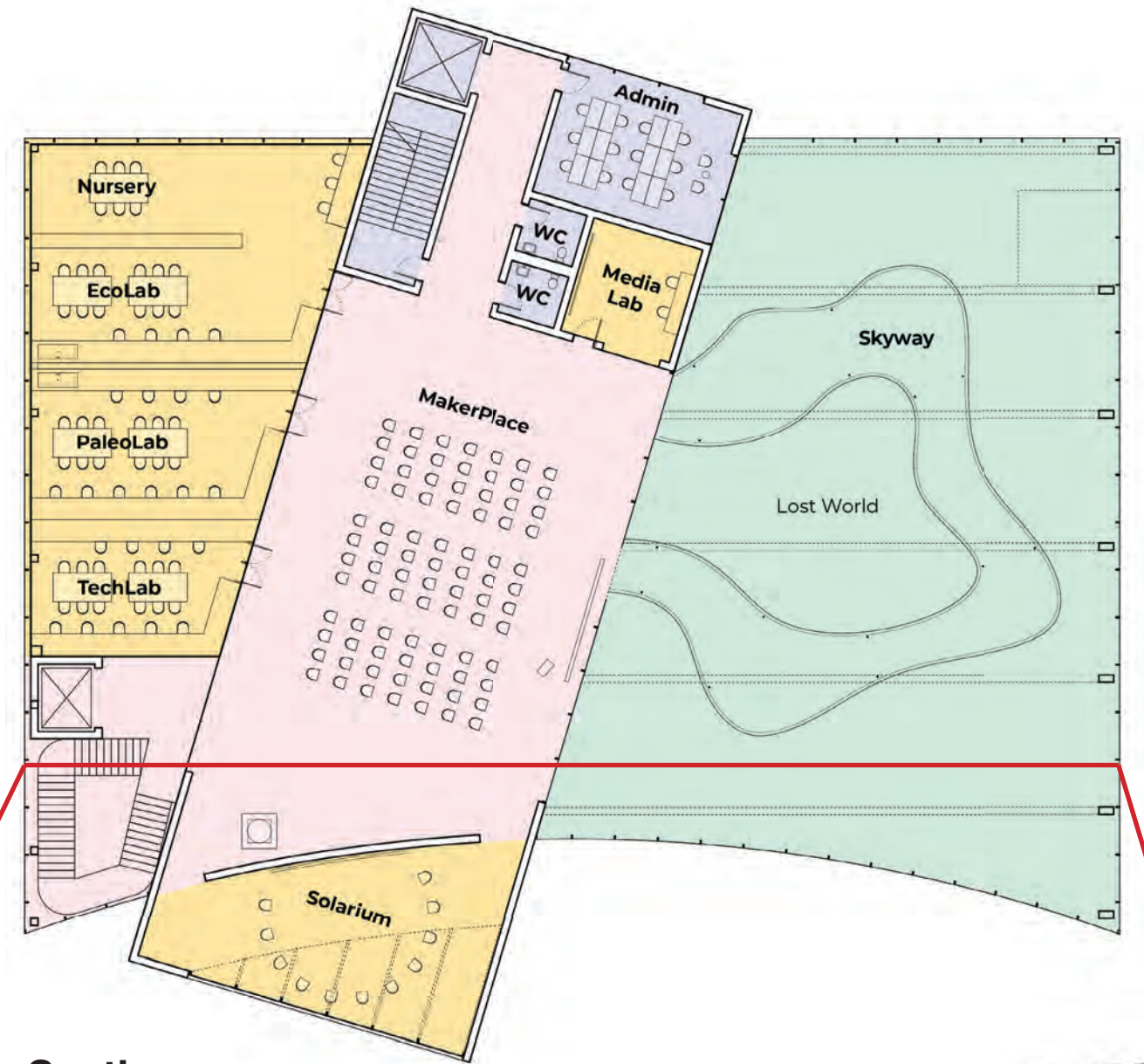
## Ground Floor



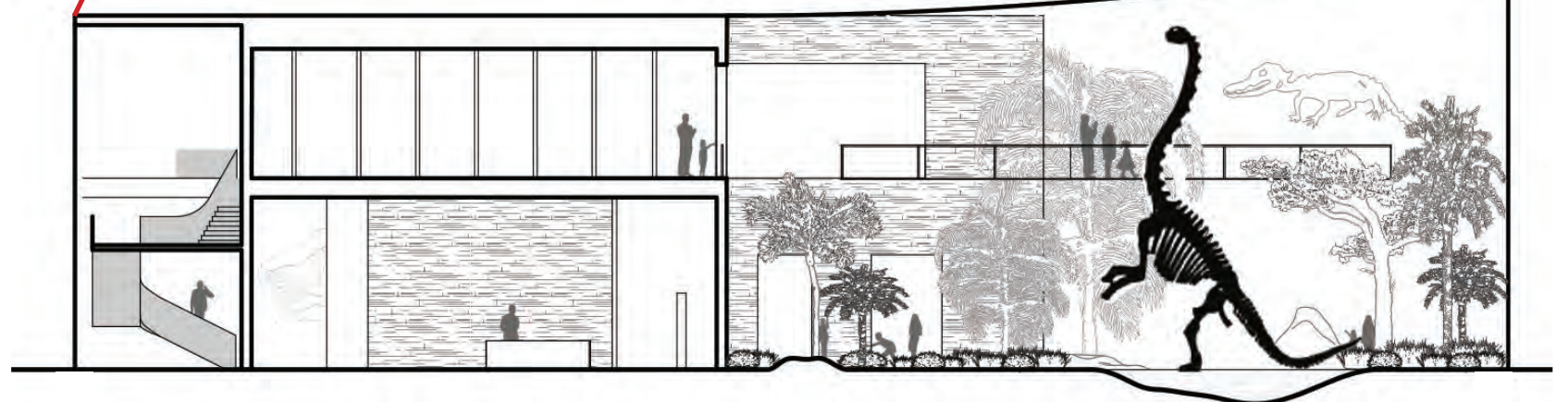
*Scitopia Chicago*, designed with community input, will transform a long vacant lot into an exciting science center and destination, providing educational opportunities for teens, celebrating the neighborhood's storied past, and opening a unique public destination in the center of a transit hub.

*Scitopia Chicago*, designed to facilitate positive social interaction, juxtaposes under one roof a half-dozen cultural components that have never been co-located.

## Second Floor



## Cross Section



# SPACE DETAIL & ORGANIZATION

## Lost World

This student-tended wonderland is a unique conservatory-vivarium-museum that for the first time brings together West Africa's iconic living and extinct species.. On promenades between pools surrounded by the skeletons of extinct creatures, visitors will encounter living plants and animals with ancestry rooted in the dinosaur era.



## African Plants

- ① Golden flame (*Gazania*)
- ② Protea (*Protea*)
- ③ Baobag (*Adansonia*)
- ④ Aloe (*Aloe*)
- ⑤ African Tree fern (*Alsophila*)
- ⑥ African cycad (*Encephalartos*)
- ⑦ Snake grass (*Equisetum*)
- ⑧ Araucaria (*Araucaria*)
- ⑨ Gingko (*Gingko*)
- ⑩ Welwitschia (*Welwitschia*)

## African Animals

- (A) Dwarf crocodile (*Osteolaemus*)
- (B) Birchir (*Polypterus*)
- (C) Guinea fowl (*Numida*)
- (D) Crested chameleon (*Trioceros*)

## African Dinosaurs

- (I) Spinosaurid (*Suchomimus*)
- (II) SuperCroc (*Sarcosuchus*)
- (III) Flying reptile (pterosaur)
- (IV) Meat eater (*Afrovenator*)
- (V) Plant eater (*Jobaria*)



## Visions

In the 1950s, Black Jazz was hopping in Washington Park, as described in the most prominent anthology of the movement: “Most of the night clubs and lounges along Garfield Boulevard were open 24 hours a day, so there was a lot of all-night sidewalk traffic.” The sights and sounds come alive in this space for all to appreciate. Likewise, the lagoon and other hidden gems in one of the city’s greatest parks are mapped and accessible in fly-overs for all to see.



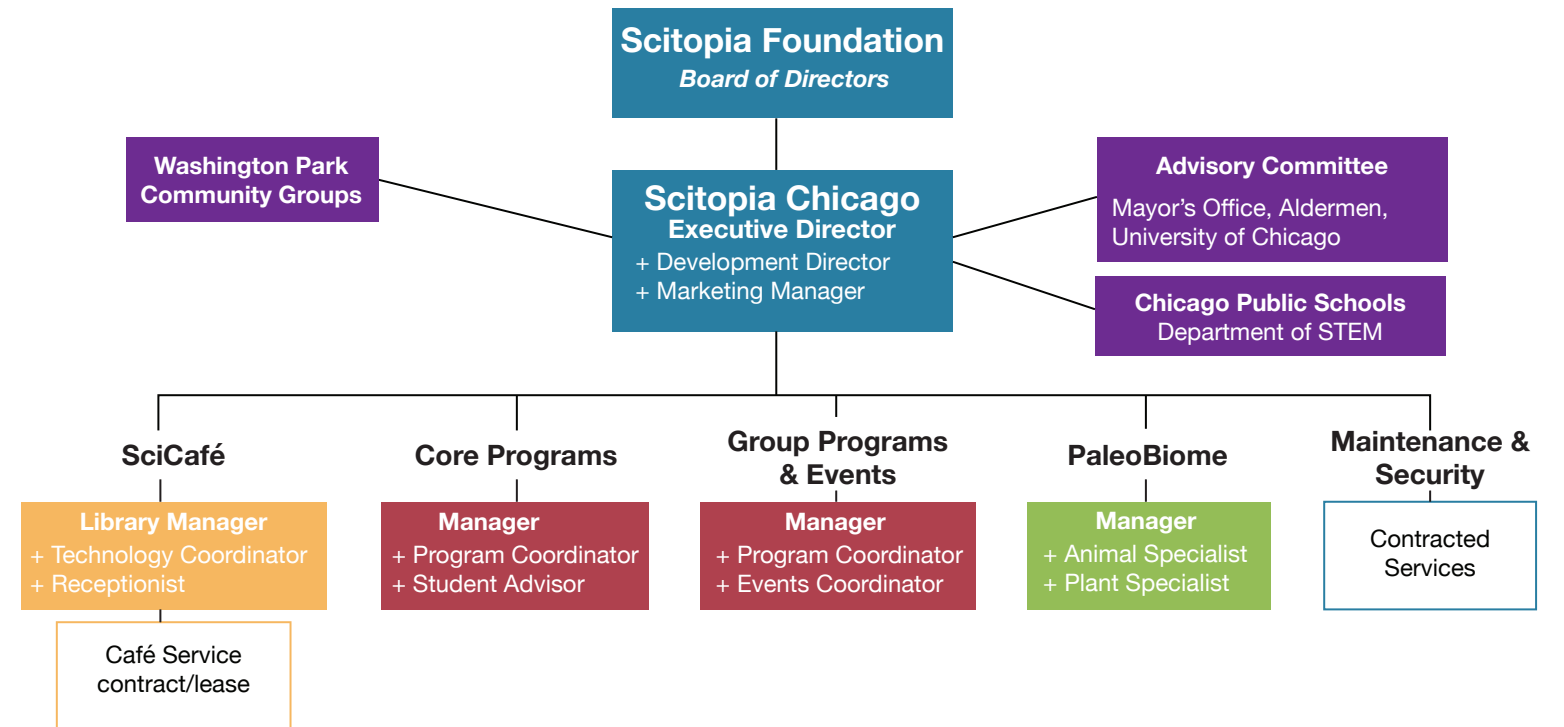
## PaleoLab

Mobile workstations, tools and equipment, a dry erase board, a projection screen and demonstration counter facilitate hands-on learning across earth science, from paleontology to forensics and cosmology. Out-of-school programs engage students in maintaining and creating exhibition components in the **Lost World** and elsewhere.



## Organization

*Scitopia Chicago*, overseen by the Scitopia Foundation, is managed by an Executive Director who receives input from several advisory bodies including Washington Park community groups.



## Corridor Partners

Partners in proximity at the east end of the Garfield Corridor include a City Colleges Learning Portal, a UChicago Clinical Technology and Training Lab, UChicago Arts Block, Burke Elementary School and city organizations and plans highlighting transit-oriented development and greenspace.



# CONSTRUCTION & OPERATION

## CONSTRUCTION COST

Estimated construction costs include site acquisition, design, construction, furnishings, and associated fees and contingency.

Building & Site Cost Summary		
1	Site Acquisition & Inspection	\$239,000
2	Financing Costs	0
3	Architecture & Engineering	\$3,552,500
4	Permit & Plan Check Fees	\$175,000
5	Specialty Consultants	\$46,500
6	Construction Services	\$38,916,000
7	Testing & Inspection	\$194,500
8	Project Management	\$2,131,000
9	Furnishings, Fixtures & Equipment	\$1,849,500
10	Relocation & Temporary Facilities	\$44,000
11	Contingency Fund (8%)	\$3,772,000
<b>Total Project Capital Costs</b>		<b>\$51,000,000</b>

## OPERATING BUDGET

The annual operating budget draws on four principal sources of funding (endowment, city support, grants, and earned revenue).

Annual Operating Budget—Summary Estimate			
1	Administration, Security & Maintenance	Staff Budget	\$500,000
		Operations Budget	\$500,000
		<b>SubTotal</b>	<b>\$1,000,000</b>
2	Reception & Imaginarium	Staff Budget	\$200,000
		Operations Budget	\$150,000
		<b>SubTotal</b>	<b>\$350,000</b>
3	Nursery & Lost World	Staff Budget	\$350,000
		Operating Budget	\$300,000
		<b>SubTotal</b>	<b>\$650,000</b>
4	Programs	Staff Budget	\$400,000
		Operations Budget	\$300,000
		<b>SubTotal</b>	<b>\$700,000</b>
<b>Total Operating Budget</b>			<b>\$2,700,000</b>

# TIMELINE

